

## Southwest Greenway Update

by Stephen Fuller-Rowell

What a difference gas at \$4.25 a gallon, atmospheric CO<sub>2</sub> at 392 parts per million, and urban growth boundaries make!

50 years ago, suburban tract housing east of Farmers Lane gave every indication that Santa Rosa was going to have its very own San Fernando Valley sprawling out along the Valley of the Moon and Bennett Valley. Cars were assumed to be the transportation of the future.

Cardiovascular disease rates were still very high, and the concept of 'jogging' had not yet arrived. Wide feeder avenues such as Yulupa Avenue and Summerfield Road were intended to

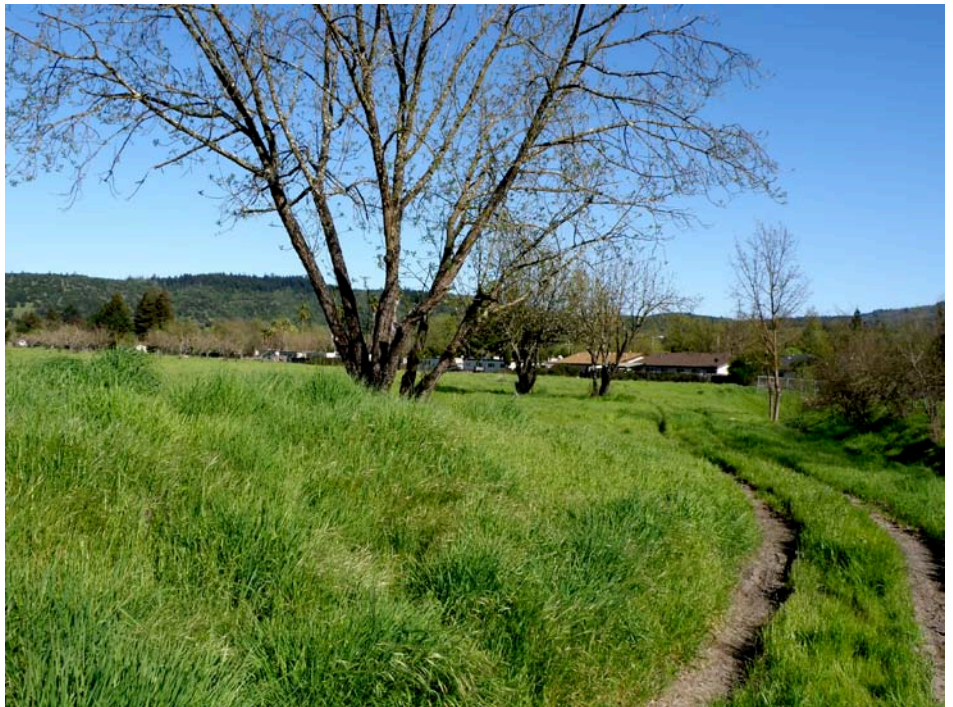
speed commuter traffic onto a major east-west freeway running from Kenwood to Highway 101 via a new bridge over Spring Lake.

Then the citizens of Santa Rosa rebelled and said: "Stop the bridge over Spring Lake!"

By that time, Caltrans had obtained most of the land needed for the new freeway: almost 50 acres stretching two miles from Farmers Lane to what is now Spring Lake Park ... and more on the other side of Spring Lake. And the land has now been sitting there for decades, fenced off to exclude bike riders, runners and walkers, and blocking north/south movement within the neighborhood.

What could this strip of land become? Could it provide a bike and trail link from Spring Lake and Annadel Park to downtown Santa Rosa, the Joe Rodota Trail and beyond to the Russian River? Could it offer safe routes to school for children attending the half dozen schools in the area? Could it transform this suburban area into a complete community of complete streets?

Join with the Southeast Greenway Campaign June 6 – 8 to **'Imagine a Greenway to Spring Lake'**.



# The Empire Runner

**Town Hall Meeting:** Monday evening, June 6, from 7:00 to 9:00 pm, at the Friedman Center, 4676 Mayette Avenue in Santa Rosa, facilitated by a team from the American Institute of Architects to gather community input and ideas;

**Focus Group Roundtables:** Monday afternoon, June 6, and Tuesday morning, June 7, with local stakeholders and interested citizens. (For topics, times and locations, visit [www.SoutheastGreenway.org](http://www.SoutheastGreenway.org)).

**Town Hall Report:** Wednesday evening, June 8, from 7:00 to 9:00 pm, at the Friedman Center, the AIA team will present a strategic plan that will move this ambitious project one step closer to fulfillment.

The American Institute of Architects Sustainable Design Assessment Team (SDAT) is a community assistance program that brings a national team of experienced volunteer professionals to help communities develop a vision and a framework for a sustainable future. The Southeast Greenway Campaign is one of very few non-



governmental entities to receive an SDAT award.

The Southeast Greenway Campaign began more than two years ago and is a community-based project to create a vital urban greenway on this land.

Come to the meetings in June and help create a valuable asset for the community and a legacy for our post-carbon future.

And watch for the next walking tour of the Southeast Greenway. These walks are announced at

[www.SoutheastGreenway.org](http://www.SoutheastGreenway.org). Get out there. See for yourself.